

“Voluntarily-continued insurance system” of Japan Health Insurance Association

After your retirement you can enroll in “Voluntarily-continued insurance system” of Japan Health Insurance Association system. Alternatively, you can enroll in National Health Insurance system or Employees’ Health Insurance system of your family member as his/her dependent. Please select one of the health insurance systems which is most beneficial for you, for example, with the best available insurance premiums.

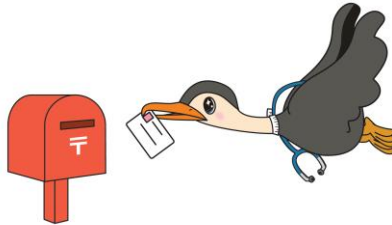
Where to apply for enrollment in a health insurance system after your retirement:

- ◆ “Voluntarily-continued insurance system” of Japan Health Insurance Association
→ Branch office of Japan Health Insurance Association in your district
- ◆ National Health Insurance system → Sections in charge of National Health Insurance system at your municipal government office
- ◆ Employees’ Health Insurance system of your family member as his/her dependent → Employer of your family member

From the next day of your retirement day, you are no longer eligible to use your employees’ health insurance card!

Please return the insurance cards of you and your family members to your former employer.

“Voluntarily-continued insurance system” of Japan Health Insurance Association



【Where to apply】

Branch office of Japan Health Insurance Association in your district

【Requirements for enrollment】

- The period of insurance before your retirement day should be longer than two consecutive months
- The enrollment application should be submitted within 20 days after your retirement day.

【Insurance period】

Up to 2 years

【Insurance premiums】

Nearly twice as much as that you paid while being in office. (Upper limit may apply.)



【Application Procedures】

① Please visit the website of Japan Health Insurance Association and download and print “Application form to obtain qualification to enroll in Voluntarily-continued insurance system”.

② Please send the following documents by post to the branch of Japan Health Insurance Association of your district so that they reach within 20 days after your retirement day without fail:

○ Filled “Application form to obtain qualification to enroll in Voluntarily-continued insurance system”

○ Certificate of income of the insured persons (※)

(※) Certificate of income for insured persons 15 years old or younger is not required. Other documents such as residential registration certificate may be necessary in some cases.

(※) As a matter of principle, the insured persons should be resident in Japan.

③ When all the procedures are completed, we will send your insurance card and payment slip to your home. Please pay the insurance premiums by due date.

