

# 医療費の推移（総医療費）

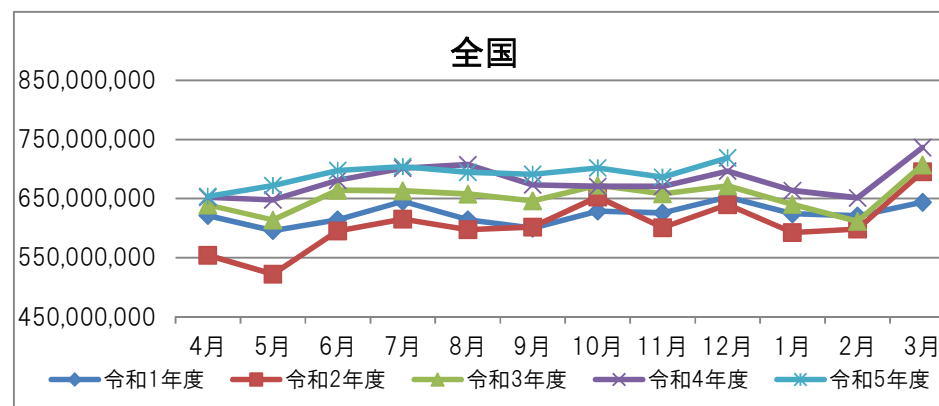
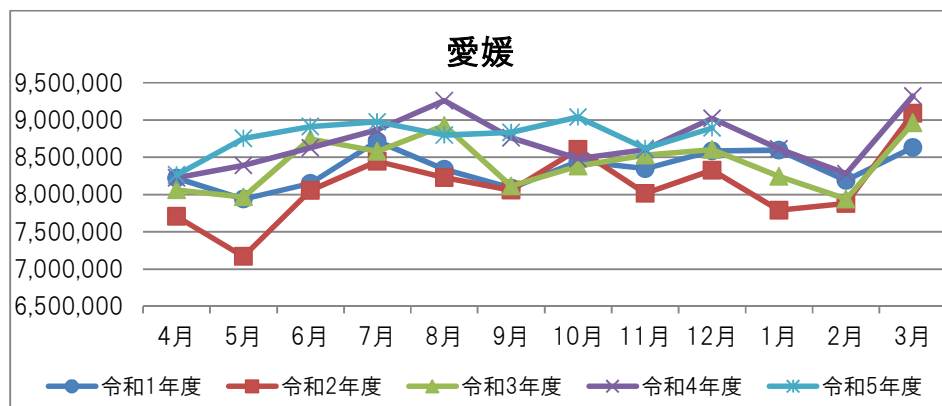
※下段は前年同月比（千円）

	4月	5月	6月	7月	8月	9月	10月	11月	12月	1月	2月	3月
	令和1年度	8,220,378	7,938,945	8,150,587	8,715,441	8,337,938	8,087,637	8,446,705	8,345,498	8,585,985	8,595,591	8,187,825
	7.80%	0.81%	2.55%	9.42%	3.76%	7.78%	2.54%	5.43%	7.09%	5.74%	4.11%	1.62%
令和2年度	7,706,619	7,169,053	8,053,618	8,444,876	8,228,804	8,057,828	8,609,157	8,015,418	8,327,824	7,787,827	7,881,398	9,089,738
	-6.25%	-9.70%	-1.19%	-3.10%	-1.31%	-0.37%	1.92%	-3.96%	-3.01%	-9.40%	-3.74%	5.31%
令和3年度	8,062,994	7,967,184	8,746,030	8,581,652	8,928,918	8,114,845	8,384,073	8,528,148	8,603,662	8,243,899	7,941,447	8,961,889
	4.62%	11.13%	8.60%	1.62%	8.51%	0.71%	-2.61%	6.40%	3.31%	5.86%	0.76%	-1.41%
令和4年度	8,224,574	8,389,780	8,627,706	8,870,669	9,259,503	8,762,173	8,480,631	8,605,410	9,024,492	8,611,010	8,279,682	9,322,628
	2.00%	5.30%	-1.35%	3.37%	3.70%	7.98%	1.15%	0.91%	4.89%	4.45%	4.26%	4.03%
令和5年度	8,264,195	8,753,617	8,914,256	8,973,818	8,799,390	8,832,622	9,039,357	8,619,834	8,893,496			
	0.48%	4.34%	3.32%	1.16%	-4.97%	0.80%	6.59%	0.17%	-1.45%			

※下段は前年同月比（千円）

	4月	5月	6月	7月	8月	9月	10月	11月	12月	1月	2月	3月
	令和1年度	621,024,082	595,592,688	614,227,317	645,263,878	614,266,542	599,774,319	628,545,470	625,813,660	652,398,296	624,251,005	620,637,968
	11.77%	3.27%	4.66%	9.38%	5.15%	9.01%	2.11%	6.05%	7.85%	2.48%	5.50%	-1.52%
令和2年度	553,944,587	521,830,040	595,416,585	615,032,986	597,373,698	601,901,416	652,484,145	600,673,889	639,606,470	592,415,387	598,297,172	695,447,890
	-10.80%	-12.38%	-3.06%	-4.69%	-2.75%	0.35%	3.81%	-4.02%	-1.96%	-5.10%	-3.60%	8.07%
令和3年度	639,338,772	613,896,085	664,160,320	662,951,640	657,601,861	645,944,480	672,413,367	657,926,807	671,412,317	640,251,116	611,457,579	707,004,511
	15.42%	17.64%	11.55%	7.79%	10.08%	7.32%	3.05%	9.53%	4.97%	8.07%	2.20%	1.66%
令和4年度	652,068,953	647,814,587	681,124,713	701,362,531	707,605,134	673,009,357	670,514,601	670,565,527	696,649,527	663,782,993	651,091,020	736,550,714
	1.99%	5.53%	2.55%	5.79%	7.60%	4.19%	-0.28%	1.92%	3.76%	3.68%	6.48%	4.18%
令和5年度	653,816,602	672,119,232	697,471,161	704,248,014	694,403,467	691,150,493	702,082,724	685,998,136	718,822,661			
	0.27%	3.75%	2.40%	0.41%	-1.87%	2.70%	4.71%	2.30%	3.18%			

※「総医療費」は、社会保険診療報酬支払基金分（入院、入院外、歯科、調剤、入院時食事療養費・生活療養費、訪問看護療養費）、療養費、移送費に係るものである。



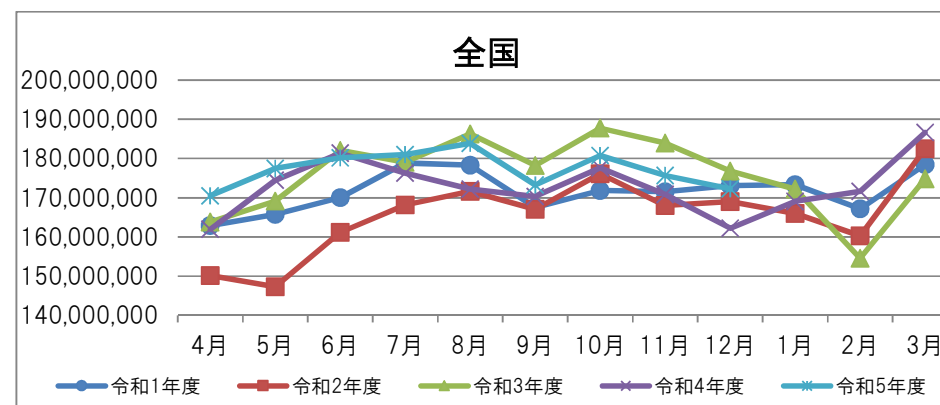
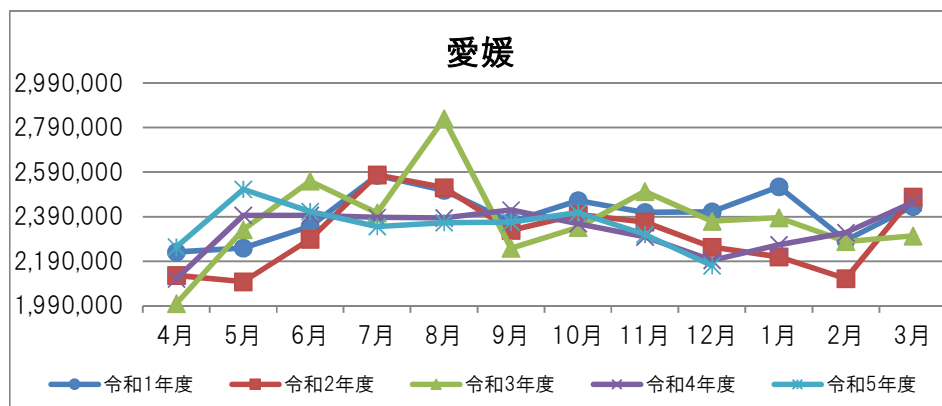
# 医療費の推移（入院）

※下段は前年同月比（千円）

	4月	5月	6月	7月	8月	9月	10月	11月	12月	1月	2月	3月
	令和1年度	2,231,421	2,249,179	2,346,367	2,575,365	2,508,041	2,365,757	2,462,304	2,408,832	2,411,617	2,524,044	2,283,427
	2.04%	-2.18%	-0.27%	6.25%	-0.15%	4.93%	5.00%	5.59%	6.52%	15.27%	6.78%	8.02%
令和2年度	2,126,421	2,097,882	2,289,306	2,577,400	2,520,360	2,328,532	2,400,026	2,366,226	2,253,008	2,209,518	2,111,286	2,477,851
	-4.71%	-6.73%	-2.43%	0.08%	0.49%	-1.57%	-2.53%	-1.77%	-6.58%	-12.46%	-7.54%	1.74%
令和3年度	1,999,388	2,331,609	2,549,480	2,407,191	2,828,700	2,248,307	2,341,891	2,502,893	2,369,324	2,384,823	2,278,622	2,303,192
	-5.97%	11.14%	11.36%	-6.60%	12.23%	-3.45%	-2.42%	5.78%	5.16%	7.93%	7.93%	-7.05%
令和4年度	2,110,848	2,396,152	2,395,921	2,386,229	2,384,110	2,419,897	2,359,263	2,299,413	2,193,441	2,263,651	2,318,101	2,454,311
	5.57%	2.77%	-6.02%	-0.87%	-15.72%	7.63%	0.74%	-8.13%	-7.42%	-5.08%	1.73%	6.56%
令和5年度	2,253,822	2,512,587	2,413,822	2,345,220	2,363,018	2,365,816	2,407,772	2,309,628	2,170,237			
	6.77%	4.86%	0.75%	-1.72%	-0.88%	-2.23%	2.06%	0.44%	-1.06%			

※下段は前年同月比（千円）

	4月	5月	6月	7月	8月	9月	10月	11月	12月	1月	2月	3月
	令和1年度	162,915,474	165,767,277	170,049,443	178,862,528	178,323,103	167,544,178	171,839,823	171,536,001	173,105,655	173,364,735	167,162,796
	7.83%	2.88%	3.31%	5.55%	2.40%	5.95%	1.51%	4.23%	5.89%	6.27%	4.60%	2.81%
令和2年度	150,144,585	147,293,955	161,189,576	168,169,492	171,652,032	167,077,170	176,121,243	168,044,204	168,986,824	165,969,369	160,305,859	182,540,880
	-7.84%	-11.14%	-5.21%	-5.98%	-3.74%	-0.28%	2.49%	-2.04%	-2.38%	-4.27%	-4.10%	2.29%
令和3年度	163,806,506	169,135,175	182,029,825	179,081,166	186,298,954	178,265,991	187,751,768	183,975,013	176,773,388	172,227,139	154,578,837	174,822,757
	9.10%	14.83%	12.93%	6.49%	8.53%	6.70%	6.60%	9.48%	4.61%	3.77%	-3.57%	-4.23%
令和4年度	161,986,295	174,472,686	181,399,402	176,277,717	172,238,130	170,368,856	177,596,892	170,854,307	162,240,233	169,049,778	171,604,312	186,631,108
	-1.11%	3.16%	-0.35%	-1.57%	-7.55%	-4.43%	-5.41%	-7.13%	-8.22%	-1.84%	11.01%	6.75%
令和5年度	170,500,440	177,447,316	180,204,572	180,984,839	183,865,310	173,307,759	180,790,749	175,673,333	172,320,603			
	5.26%	1.70%	-0.66%	2.67%	6.75%	1.73%	1.80%	2.82%	6.21%			



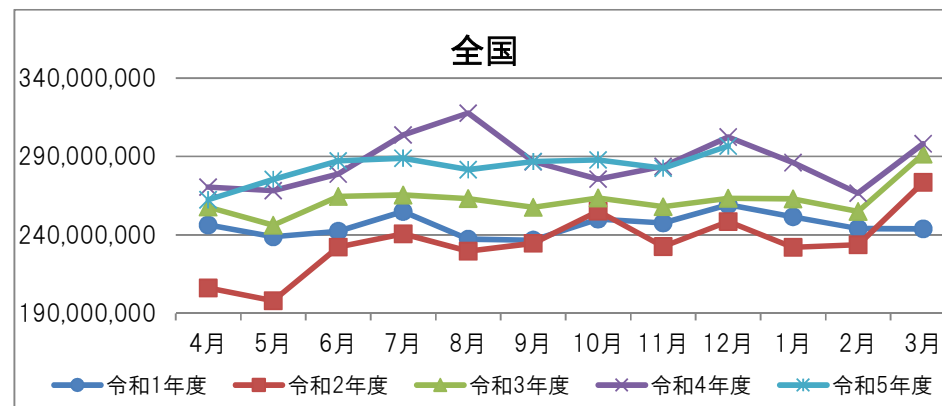
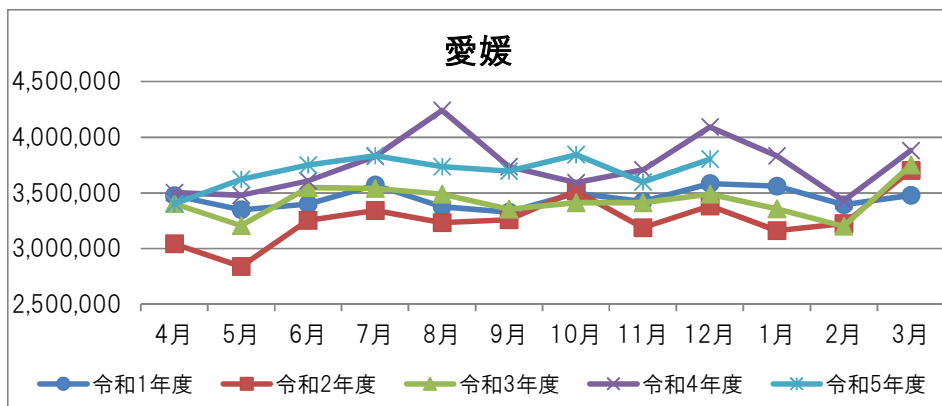
# 医療費の推移（入院外）

※下段は前年同月比（千円）

愛媛		4月	5月	6月	7月	8月	9月	10月	11月	12月	1月	2月	3月
	令和1年度		3,475,175	3,347,091	3,398,010	3,571,073	3,374,040	3,328,171	3,497,817	3,421,561	3,582,905	3,560,040	3,393,547
		10.93%	2.56%	4.55%	10.56%	4.45%	8.30%	1.79%	4.73%	8.28%	-0.16%	1.85%	-3.80%
令和2年度		3,042,839	2,838,186	3,253,962	3,340,199	3,233,300	3,258,292	3,516,433	3,188,257	3,382,256	3,159,884	3,223,726	3,700,429
		-12.44%	-15.20%	-4.24%	-6.47%	-4.17%	-2.10%	0.53%	-6.82%	-5.60%	-11.24%	-5.00%	6.38%
令和3年度		3,404,175	3,205,172	3,547,688	3,539,399	3,489,293	3,353,859	3,412,261	3,411,458	3,489,131	3,356,458	3,199,625	3,749,246
		11.87%	12.93%	9.03%	5.96%	7.92%	2.93%	-2.96%	7.00%	3.16%	6.22%	-0.75%	1.32%
令和4年度		3,501,223	3,477,703	3,607,617	3,827,755	4,240,761	3,733,750	3,590,812	3,705,711	4,091,352	3,831,937	3,428,530	3,878,860
		2.85%	8.50%	1.69%	8.15%	21.54%	11.33%	5.23%	8.63%	17.26%	14.17%	7.15%	3.46%
令和5年度		3,400,484	3,620,545	3,750,034	3,831,795	3,733,823	3,693,713	3,842,456	3,598,209	3,803,522			
		-2.88%	4.11%	3.95%	0.11%	-11.95%	-1.07%	7.01%	-2.90%	-7.04%			

※下段は前年同月比（千円）

全国		4月	5月	6月	7月	8月	9月	10月	11月	12月	1月	2月	3月
	令和1年度		246,291,024	238,834,248	242,430,570	254,895,627	237,298,336	236,702,278	250,089,850	247,629,379	259,316,455	251,688,846	244,162,741
		12.38%	3.89%	4.88%	10.64%	5.68%	10.45%	2.13%	6.37%	9.02%	-0.22%	4.07%	-5.03%
令和2年度		206,269,375	198,078,748	232,360,741	240,683,353	229,614,452	234,617,793	255,110,205	232,592,305	248,532,205	232,035,527	233,692,073	273,554,890
		-16.25%	-17.06%	-4.15%	-5.58%	-3.24%	-0.88%	2.01%	-6.07%	-4.16%	-7.81%	-4.29%	12.14%
令和3年度		257,891,032	246,219,129	264,633,620	265,407,492	263,193,100	257,532,153	263,553,083	257,933,019	263,352,454	263,053,108	255,019,341	291,541,770
		25.03%	24.30%	13.89%	10.27%	14.62%	9.77%	3.31%	10.89%	5.96%	13.37%	9.13%	6.58%
令和4年度		270,547,370	268,305,530	278,776,779	303,717,092	317,704,778	286,725,496	275,711,636	283,799,137	302,416,381	286,238,013	266,672,759	298,155,132
		4.91%	8.97%	5.34%	14.43%	20.71%	11.34%	4.61%	10.03%	14.83%	8.81%	4.57%	2.27%
令和5年度		262,476,497	275,402,613	287,247,787	289,025,586	281,712,912	286,852,273	287,926,789	282,590,899	296,681,270			
		-2.98%	2.65%	3.04%	-4.84%	-11.33%	0.04%	4.43%	-0.43%	-1.90%			



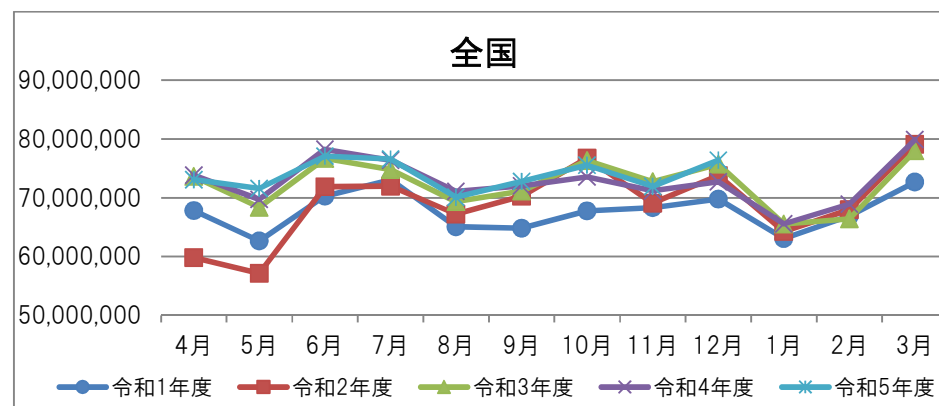
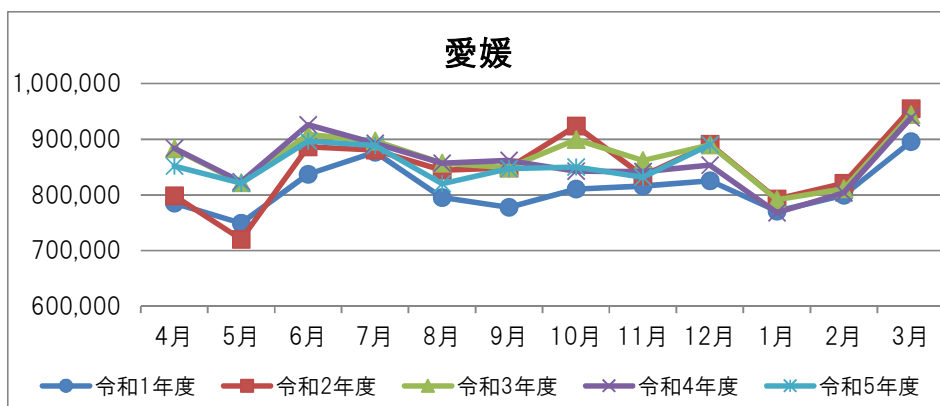
# 医療費の推移（歯科）

※下段は前年同月比（千円）

	4月	5月	6月	7月	8月	9月	10月	11月	12月	1月	2月	3月
	令和1年度	784,945	749,083	836,672	876,750	795,021	777,471	810,662	815,964	825,292	770,655	799,391
	2.52%	-1.59%	0.36%	11.33%	3.66%	6.14%	-0.49%	5.00%	4.22%	8.18%	4.70%	5.23%
令和2年度	798,136	720,184	886,097	880,045	844,129	848,667	923,691	834,256	890,858	792,532	820,376	954,597
	1.68%	-3.86%	5.91%	0.38%	6.18%	9.16%	13.94%	2.24%	7.94%	2.84%	2.63%	6.60%
令和3年度	882,650	822,166	908,036	896,598	856,960	849,152	899,298	861,990	889,592	791,422	810,790	944,024
	10.59%	14.16%	2.48%	1.88%	1.52%	0.06%	-2.64%	3.32%	-0.14%	-0.14%	-1.17%	-1.11%
令和4年度	883,698	823,675	925,922	892,408	856,864	861,964	842,686	841,816	853,077	768,029	803,799	938,240
	0.12%	0.18%	1.97%	-0.47%	-0.01%	1.51%	-6.30%	-2.34%	-4.10%	-2.96%	-0.86%	-0.61%
令和5年度	851,571	821,000	896,414	888,981	819,792	846,706	850,286	831,466	890,279			
	-3.64%	-0.32%	-3.19%	-0.38%	-4.33%	-1.77%	0.90%	-1.23%	4.36%			

※下段は前年同月比（千円）

	4月	5月	6月	7月	8月	9月	10月	11月	12月	1月	2月	3月
	令和1年度	67,849,708	62,659,082	70,275,434	73,057,114	65,063,838	64,818,193	67,766,662	68,342,253	69,760,462	63,099,128	66,943,391
	9.87%	0.70%	3.09%	10.48%	4.18%	7.26%	0.12%	7.55%	6.62%	7.89%	6.19%	0.79%
令和2年度	59,839,840	57,153,774	71,896,349	72,009,901	67,218,727	70,274,293	76,740,165	69,103,741	73,812,101	64,297,348	67,989,012	79,104,479
	-11.81%	-8.79%	2.31%	-1.43%	3.31%	8.42%	13.24%	1.11%	5.81%	1.90%	1.56%	8.81%
令和3年度	73,626,473	68,362,063	76,682,982	74,789,636	69,319,813	71,123,840	76,344,126	72,716,522	75,664,523	65,531,011	66,451,715	77,972,907
	23.04%	19.61%	6.66%	3.86%	3.13%	1.21%	-0.52%	5.23%	2.51%	1.92%	-2.26%	-1.43%
令和4年度	73,815,109	69,710,240	78,247,143	76,395,028	71,060,870	72,024,317	73,552,858	71,204,452	72,754,514	65,579,595	68,925,716	79,892,729
	0.26%	1.97%	2.04%	2.15%	2.51%	1.27%	-3.66%	-2.08%	-3.85%	0.07%	3.72%	2.46%
令和5年度	73,103,277	71,572,208	77,070,774	76,569,249	70,098,360	72,808,111	75,529,847	71,959,469	76,385,907			
	-0.96%	2.67%	-1.50%	0.23%	-1.35%	1.09%	2.69%	1.06%	4.99%			



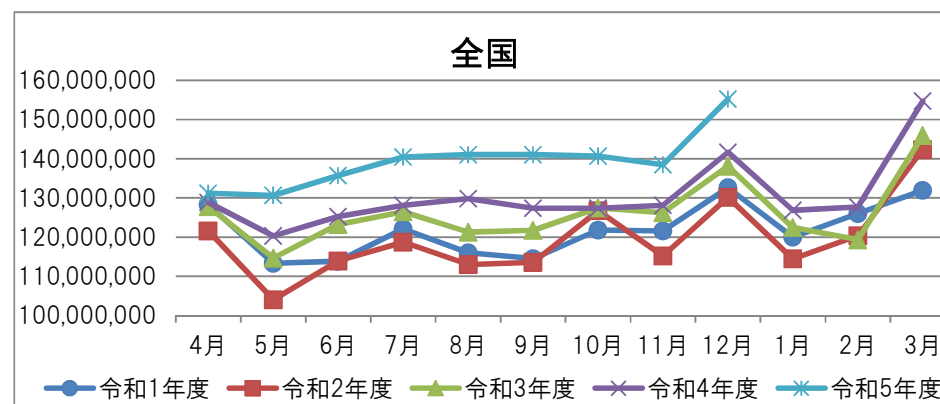
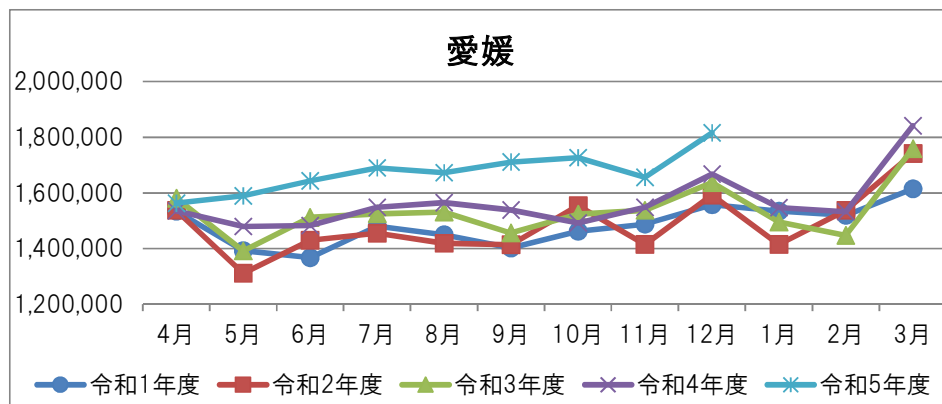
# 医療費の推移（薬剤）

※下段は前年同月比（千円）

	4月	5月	6月	7月	8月	9月	10月	11月	12月	1月	2月	3月
	令和1年度	1,533,780	1,392,483	1,367,211	1,479,804	1,449,208	1,402,275	1,461,778	1,488,007	1,557,649	1,534,094	1,519,224
	13.01%	3.13%	4.54%	12.23%	9.83%	12.35%	1.69%	6.96%	7.38%	5.08%	5.65%	2.72%
令和2年度	1,537,320	1,310,361	1,429,565	1,455,108	1,418,444	1,412,915	1,554,208	1,414,732	1,592,077	1,414,308	1,537,740	1,741,812
	0.23%	-5.90%	4.56%	-1.67%	-2.12%	0.76%	6.32%	-4.92%	2.21%	-7.81%	1.22%	7.91%
令和3年度	1,580,481	1,390,878	1,512,051	1,524,644	1,530,422	1,455,839	1,523,094	1,537,032	1,637,163	1,495,311	1,447,347	1,758,534
	2.81%	6.14%	5.77%	4.78%	7.89%	3.04%	-2.00%	8.64%	2.83%	5.73%	-5.88%	0.96%
令和4年度	1,534,600	1,478,795	1,482,437	1,548,009	1,564,691	1,538,013	1,492,101	1,547,918	1,667,244	1,546,510	1,531,871	1,841,148
	-2.90%	6.32%	-1.96%	1.53%	2.24%	5.64%	-2.03%	0.71%	1.84%	3.42%	5.84%	4.70%
令和5年度	1,562,768	1,588,775	1,642,819	1,689,269	1,673,149	1,710,601	1,726,912	1,655,750	1,815,890			
	1.84%	7.44%	10.82%	9.13%	6.93%	11.22%	15.74%	6.97%	8.92%			

※下段は前年同月比（千円）

	4月	5月	6月	7月	8月	9月	10月	11月	12月	1月	2月	3月
	令和1年度	128,314,671	113,329,494	113,887,726	122,120,961	116,047,651	114,560,419	121,793,031	121,559,300	132,619,894	120,016,555	126,014,005
	17.73%	5.15%	6.59%	13.19%	9.73%	12.74%	3.56%	7.67%	9.23%	0.54%	9.57%	-1.20%
令和2年度	121,573,133	104,043,814	113,955,073	118,742,355	113,037,470	113,581,652	126,755,536	115,171,303	130,181,763	114,470,000	120,414,354	142,348,295
	-5.25%	-8.19%	0.06%	-2.77%	-2.59%	-0.85%	4.07%	-5.26%	-1.84%	-4.62%	-4.44%	7.85%
令和3年度	127,797,465	114,659,977	123,277,986	126,448,457	121,268,078	121,748,320	127,442,536	126,225,800	138,091,648	122,520,450	119,322,416	145,918,247
	5.12%	10.20%	8.18%	6.49%	7.28%	7.19%	0.54%	9.60%	6.08%	7.03%	-0.91%	2.51%
令和4年度	128,852,965	120,321,278	125,264,277	128,130,510	129,841,410	127,409,346	127,371,944	128,114,907	141,683,748	126,858,259	127,702,077	154,740,560
	0.83%	4.94%	1.61%	1.33%	7.07%	4.65%	-0.06%	1.50%	2.60%	3.54%	7.02%	6.05%
令和5年度	131,218,273	130,658,292	135,722,272	140,461,334	141,074,584	141,048,453	140,694,030	138,523,286	155,234,795			
	1.84%	8.59%	8.35%	9.62%	8.65%	10.70%	10.46%	8.12%	9.56%			



# 1人あたり医療費の推移（総医療費）

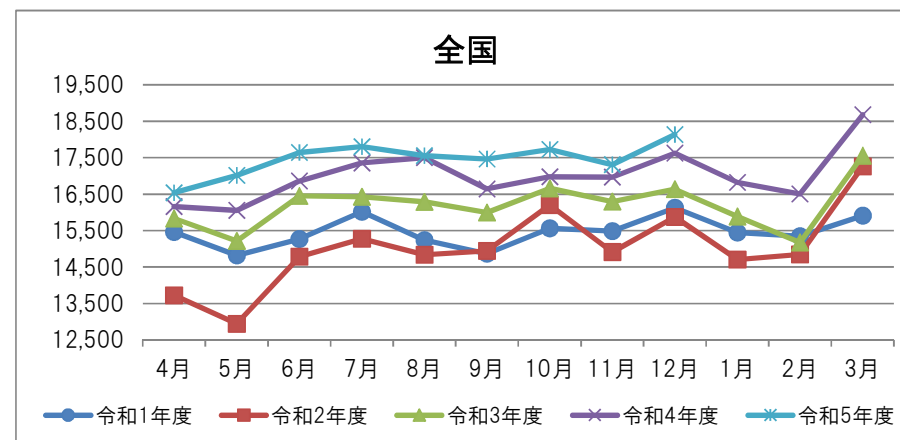
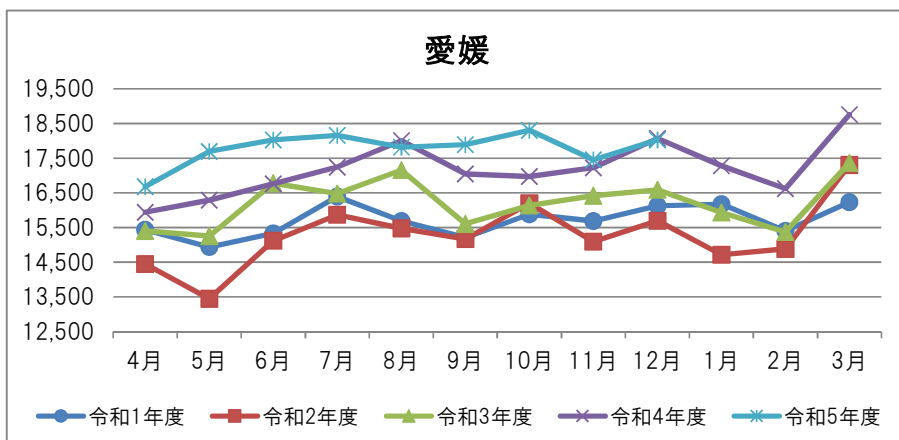
※下段は前年同月比

愛媛		4月	5月	6月	7月	8月	9月	10月	11月	12月	1月	2月	3月
	令和1年度		15,435	14,941	15,331	16,394	15,693	15,209	15,884	15,689	16,130	16,176	15,405
		7.32%	0.38%	1.96%	8.87%	3.16%	7.04%	1.67%	4.60%	6.24%	4.92%	3.31%	0.75%
令和2年度		14,445	13,446	15,119	15,868	15,475	15,170	16,204	15,096	15,699	14,712	14,882	17,305
		-6.41%	-10.00%	-1.38%	-3.21%	-1.39%	-0.26%	2.02%	-3.78%	-2.67%	-9.05%	-3.39%	6.60%
令和3年度		15,402	15,254	16,774	16,479	17,156	15,607	16,138	16,422	16,591	15,931	15,369	17,365
		6.62%	13.44%	10.94%	3.85%	10.87%	2.88%	-0.41%	8.79%	5.69%	8.29%	3.27%	0.34%
令和4年度		15,941	16,291	16,757	17,236	18,005	17,046	16,969	17,222	18,069	17,278	16,626	18,758
		3.50%	6.80%	-0.10%	4.59%	4.95%	9.22%	5.15%	4.87%	8.91%	8.45%	8.18%	8.02%
令和5年度		16,683	17,692	18,026	18,156	17,820	17,890	18,307	17,455	18,024			
		4.65%	8.61%	7.57%	5.33%	-1.03%	4.95%	7.88%	1.35%	-0.25%			

※下段は前年同月比

全国		4月	5月	6月	7月	8月	9月	10月	11月	12月	1月	2月	3月
	令和1年度		15,459	14,820	15,266	16,017	15,239	14,863	15,562	15,487	16,125	15,443	15,344
		8.51%	0.51%	1.87%	6.48%	2.26%	5.93%	-0.94%	3.07%	4.87%	-0.27%	2.72%	-4.06%
令和2年度		13,725	12,946	14,780	15,274	14,836	14,944	16,202	14,909	15,868	14,707	14,845	17,258
		-11.22%	-12.65%	-3.18%	-4.64%	-2.65%	0.55%	4.11%	-3.73%	-1.59%	-4.76%	-3.25%	8.47%
令和3年度		15,835	15,214	16,454	16,423	16,291	15,998	16,659	16,294	16,633	15,883	15,173	17,559
		15.37%	17.52%	11.33%	7.52%	9.81%	7.05%	2.82%	9.29%	4.82%	8.00%	2.21%	1.74%
令和4年度		16,155	16,053	16,861	17,353	17,503	16,642	16,979	16,967	17,625	16,818	16,500	18,675
		2.02%	5.52%	2.48%	5.66%	7.44%	4.02%	1.92%	4.13%	5.96%	5.89%	8.75%	6.36%
令和5年度		16,536	17,011	17,643	17,805	17,553	17,463	17,725	17,311	18,133			
		2.36%	5.96%	4.64%	2.61%	0.28%	4.94%	4.40%	2.03%	2.88%			

※「総医療費」は、社会保険診療報酬支払基金分（入院、入院外、歯科、調剤、入院時食事療養費・生活療養費、訪問看護療養費）、療養費、移送費に係るものである。



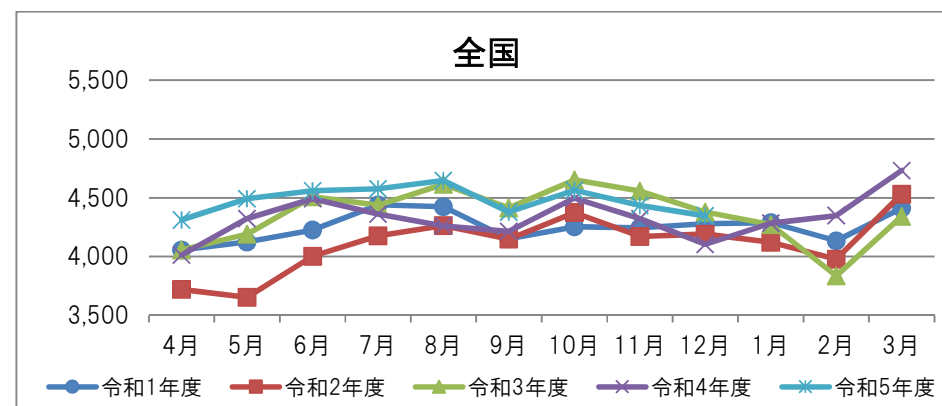
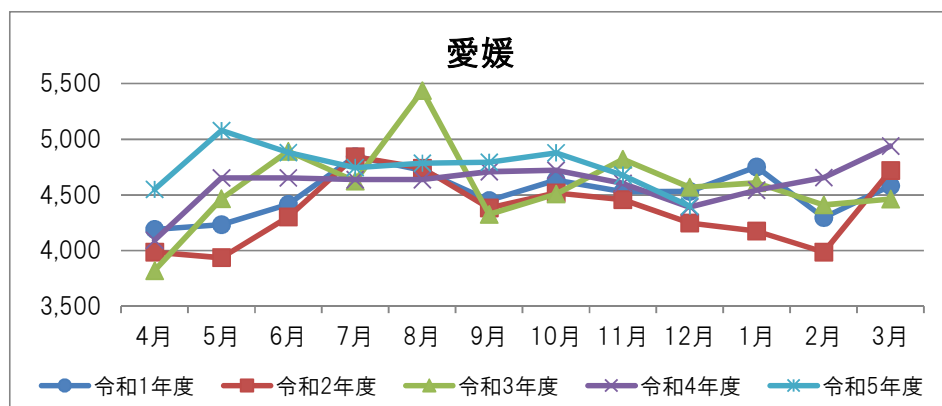
# 1人あたり医療費の推移（入院）

※下段は前年同月比

		4月	5月	6月	7月	8月	9月	10月	11月	12月	1月	2月	3月
		愛媛	令和1年度	4,190	4,233	4,414	4,844	4,720	4,449	4,630	4,528	4,531	4,750
		1.59%	-2.61%	-0.84%	5.72%	-0.72%	4.22%	4.12%	4.76%	5.69%	14.39%	5.97%	7.10%
	令和2年度	3,986	3,935	4,302	4,843	4,740	4,384	4,517	4,456	4,247	4,174	3,987	4,717
		-4.87%	-7.04%	-2.53%	-0.03%	0.41%	-1.46%	-2.44%	-1.59%	-6.26%	-12.12%	-7.20%	3.00%
	令和3年度	3,819	4,464	4,890	4,623	5,435	4,324	4,508	4,820	4,569	4,609	4,410	4,463
		-4.18%	13.45%	13.67%	-4.55%	14.67%	-1.36%	-0.21%	8.15%	7.58%	10.41%	10.61%	-5.40%
	令和4年度	4,091	4,653	4,654	4,637	4,636	4,708	4,721	4,602	4,392	4,542	4,655	4,938
		7.12%	4.22%	-4.83%	0.31%	-14.70%	8.87%	4.73%	-4.52%	-3.88%	-1.44%	5.55%	10.65%
	令和5年度	4,550	5,078	4,881	4,745	4,785	4,792	4,876	4,677	4,398			
		11.21%	9.15%	4.89%	2.33%	3.22%	1.79%	3.30%	1.63%	0.15%			

※下段は前年同月比

		4月	5月	6月	7月	8月	9月	10月	11月	12月	1月	2月	3月
		全国	令和1年度	4,056	4,125	4,226	4,440	4,424	4,152	4,254	4,245	4,279	4,289
		4.68%	0.14%	0.56%	2.75%	-0.41%	2.96%	-1.51%	1.30%	2.97%	3.41%	1.84%	0.16%
	令和2年度	3,720	3,654	4,003	4,177	4,263	4,148	4,373	4,171	4,192	4,120	3,977	4,530
		-8.27%	-11.41%	-5.28%	-5.93%	-3.64%	-0.09%	2.79%	-1.74%	-2.02%	-3.93%	-3.76%	2.66%
	令和3年度	4,057	4,192	4,510	4,436	4,615	4,415	4,651	4,556	4,379	4,273	3,836	4,342
		9.06%	14.71%	12.65%	6.22%	8.26%	6.44%	6.36%	9.24%	4.46%	3.69%	-3.56%	-4.15%
	令和4年度	4,013	4,324	4,491	4,361	4,261	4,213	4,497	4,323	4,105	4,283	4,349	4,732
		-1.08%	3.15%	-0.42%	-1.69%	-7.69%	-4.58%	-3.32%	-5.12%	-6.27%	0.25%	13.38%	8.99%
	令和5年度	4,312	4,491	4,558	4,576	4,648	4,379	4,564	4,433	4,347			
		7.45%	3.87%	1.51%	4.91%	9.09%	3.94%	1.49%	2.54%	5.90%			



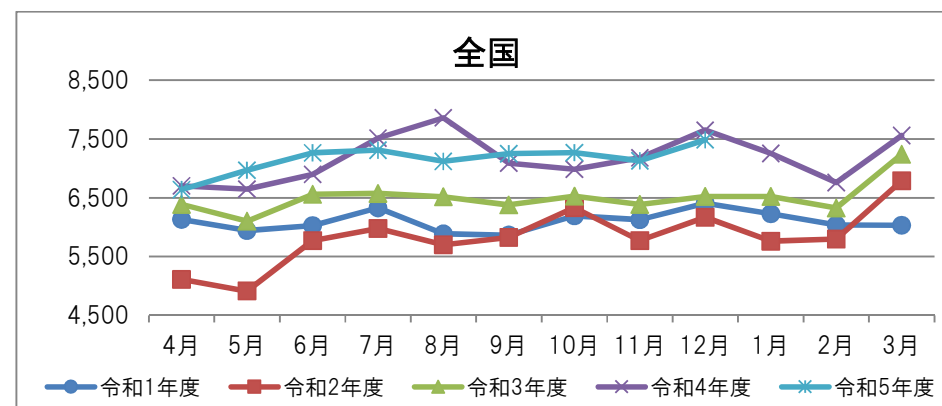
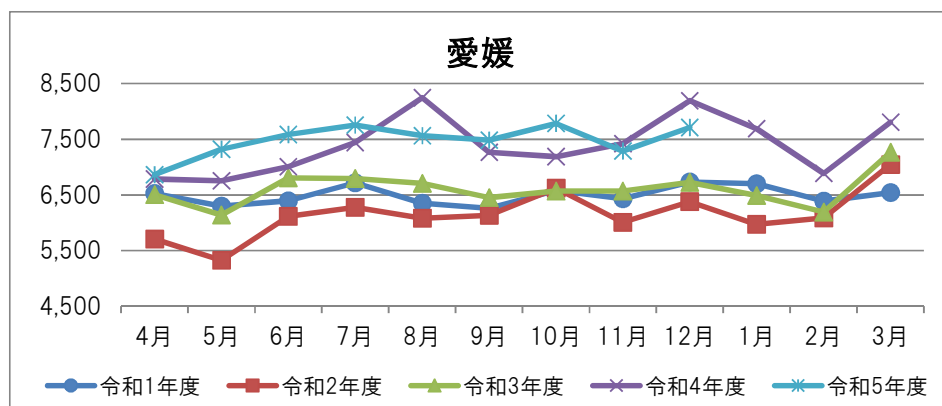
# 1人あたり医療費の推移（入院外）

※下段は前年同月比

愛媛		4月	5月	6月	7月	8月	9月	10月	11月	12月	1月	2月	3月
	令和1年度		6,525	6,299	6,392	6,717	6,350	6,259	6,578	6,432	6,731	6,700	6,385
		10.45%	2.11%	3.96%	10.00%	3.85%	7.56%	0.93%	3.91%	7.43%	-0.93%	1.08%	-4.62%
令和2年度		5,703	5,323	6,114	6,276	6,080	6,134	6,619	6,004	6,376	5,969	6,087	7,045
		-12.59%	-15.49%	-4.34%	-6.57%	-4.25%	-1.99%	0.63%	-6.65%	-5.28%	-10.90%	-4.66%	7.69%
令和3年度		6,503	6,137	6,804	6,797	6,704	6,450	6,568	6,569	6,728	6,486	6,192	7,265
		14.01%	15.28%	11.28%	8.29%	10.26%	5.15%	-0.77%	9.41%	5.53%	8.66%	1.72%	3.12%
令和4年度		6,786	6,753	7,007	7,438	8,246	7,264	7,185	7,416	8,192	7,689	6,885	7,805
		4.36%	10.04%	2.98%	9.43%	23.00%	12.61%	9.39%	12.89%	21.75%	18.54%	11.18%	7.43%
令和5年度		6,864	7,318	7,583	7,753	7,561	7,482	7,782	7,286	7,708			
		1.15%	8.37%	8.22%	4.23%	-8.30%	3.00%	8.31%	-1.76%	-5.90%			

※下段は前年同月比

全国		4月	5月	6月	7月	8月	9月	10月	11月	12月	1月	2月	3月
	令和1年度		6,131	5,943	6,025	6,327	5,887	5,866	6,192	6,128	6,409	6,226	6,036
		9.10%	1.11%	2.08%	7.71%	2.78%	7.33%	-0.92%	3.38%	6.01%	-2.89%	1.33%	-7.48%
令和2年度		5,111	4,914	5,771	5,977	5,703	5,825	6,335	5,773	6,166	5,760	5,798	6,789
		-16.64%	-17.31%	-4.22%	-5.53%	-3.13%	-0.69%	2.30%	-5.79%	-3.80%	-7.48%	-3.94%	12.55%
令和3年度		6,387	6,102	6,556	6,575	6,520	6,378	6,529	6,388	6,524	6,526	6,328	7,241
		24.98%	24.18%	13.61%	10.00%	14.34%	9.50%	3.08%	10.65%	5.81%	13.28%	9.14%	6.66%
令和4年度		6,703	6,649	6,901	7,514	7,859	7,090	6,982	7,181	7,651	7,252	6,758	7,560
		4.94%	8.96%	5.27%	14.29%	20.53%	11.16%	6.93%	12.41%	17.27%	11.14%	6.80%	4.41%
令和5年度		6,639	6,970	7,266	7,307	7,121	7,248	7,269	7,131	7,484			
		-0.96%	4.83%	5.29%	-2.76%	-9.39%	2.23%	4.12%	-0.69%	-2.18%			





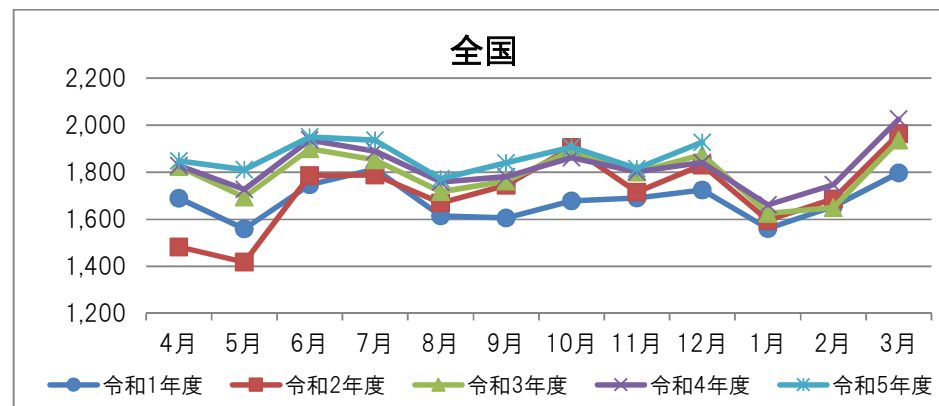
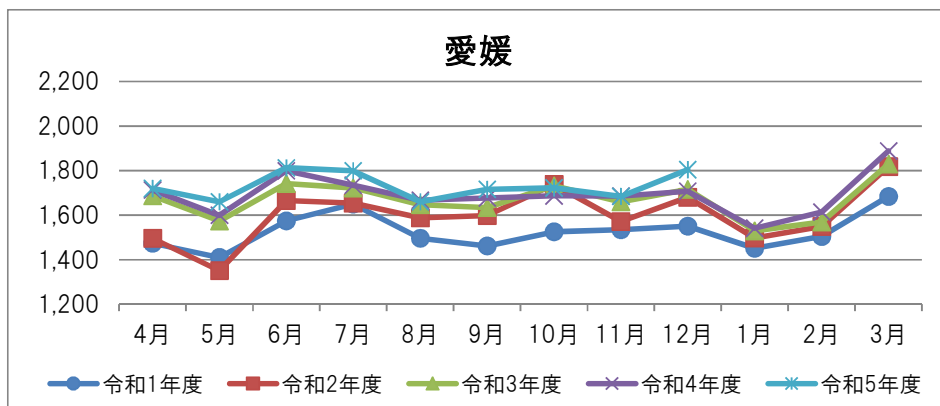
# 1人あたり医療費の推移（歯科）

※下段は前年同月比

	4月	5月	6月	7月	8月	9月	10月	11月	12月	1月	2月	3月
	令和1年度	1,474	1,410	1,574	1,649	1,496	1,462	1,524	1,534	1,550	1,450	1,504
	2.07%	-2.02%	-0.22%	10.77%	3.06%	5.41%	-1.33%	4.18%	3.41%	7.35%	3.91%	4.34%
令和2年度	1,496	1,351	1,665	1,654	1,587	1,598	1,739	1,571	1,679	1,497	1,549	1,817
	1.50%	-4.18%	5.80%	0.27%	6.09%	9.28%	14.05%	2.43%	8.32%	3.23%	3.00%	7.91%
令和3年度	1,686	1,574	1,742	1,722	1,647	1,633	1,731	1,660	1,715	1,529	1,569	1,829
	12.70%	16.53%	4.60%	4.12%	3.73%	2.22%	-0.44%	5.65%	2.15%	2.15%	1.29%	0.65%
令和4年度	1,713	1,599	1,798	1,734	1,666	1,677	1,686	1,685	1,708	1,541	1,614	1,888
	1.59%	1.60%	3.27%	0.71%	1.19%	2.68%	-2.59%	1.50%	-0.43%	0.76%	2.86%	3.21%
令和5年度	1,719	1,659	1,813	1,799	1,660	1,715	1,722	1,684	1,804			
	0.36%	3.75%	0.79%	3.72%	-0.36%	2.27%	2.13%	-0.07%	5.63%			

※下段は前年同月比

	4月	5月	6月	7月	8月	9月	10月	11月	12月	1月	2月	3月
	令和1年度	1,689	1,559	1,747	1,813	1,614	1,606	1,678	1,691	1,724	1,561	1,655
	6.66%	-1.99%	0.34%	7.56%	1.32%	4.23%	-2.86%	4.52%	3.68%	5.00%	3.39%	-1.81%
令和2年度	1,483	1,418	1,786	1,788	1,669	1,745	1,905	1,715	1,831	1,596	1,687	1,963
	-12.22%	-9.06%	2.23%	-1.38%	3.42%	8.62%	13.57%	1.42%	6.20%	2.26%	1.93%	9.21%
令和3年度	1,824	1,694	1,900	1,853	1,717	1,762	1,891	1,801	1,874	1,626	1,649	1,936
	22.99%	19.49%	6.39%	3.60%	2.87%	0.96%	-0.74%	4.99%	2.37%	1.84%	-2.25%	-1.35%
令和4年度	1,829	1,727	1,937	1,890	1,758	1,781	1,863	1,802	1,841	1,662	1,747	2,026
	0.28%	1.96%	1.96%	2.02%	2.36%	1.10%	-1.53%	0.04%	-1.81%	2.21%	5.93%	4.61%
令和5年度	1,849	1,811	1,950	1,936	1,772	1,840	1,907	1,816	1,927			
	1.10%	4.86%	0.65%	2.42%	0.80%	3.29%	2.38%	0.79%	4.69%			



# 1人あたり医療費の推移（薬剤）

※下段は前年同月比

愛媛		4月	5月	6月	7月	8月	9月	10月	11月	12月	1月	2月	3月
	令和1年度		2,880	2,621	2,572	2,784	2,728	2,637	2,749	2,797	2,926	2,887	2,858
		12.52%	2.69%	3.94%	11.67%	9.19%	11.58%	0.84%	6.12%	6.54%	4.28%	4.85%	1.84%
令和2年度		2,882	2,458	2,686	2,734	2,667	2,660	2,925	2,664	3,001	2,672	2,904	3,316
		0.06%	-6.21%	4.45%	-1.77%	-2.20%	0.87%	6.42%	-4.75%	2.56%	-7.45%	1.59%	9.24%
令和3年度		3,019	2,663	2,900	2,928	2,941	2,800	2,932	2,960	3,157	2,890	2,801	3,407
		4.77%	8.35%	7.96%	7.08%	10.24%	5.26%	0.22%	11.09%	5.19%	8.15%	-3.53%	2.75%
令和4年度		2,974	2,871	2,879	3,008	3,043	2,992	2,986	3,098	3,338	3,103	3,076	3,705
		-1.48%	7.83%	-0.71%	2.74%	3.47%	6.86%	1.84%	4.67%	5.74%	7.39%	9.82%	8.72%
令和5年度		3,155	3,211	3,322	3,418	3,388	3,465	3,497	3,353	3,680			
		6.06%	11.83%	15.37%	13.63%	11.36%	15.80%	17.14%	8.23%	10.24%			

※下段は前年同月比

全国		4月	5月	6月	7月	8月	9月	10月	11月	12月	1月	2月	3月
	令和1年度		3,194	2,820	2,830	3,031	2,879	2,839	3,015	3,008	3,278	2,969	3,115
		14.29%	2.34%	3.75%	10.20%	6.71%	9.56%	0.47%	4.65%	6.21%	-2.16%	6.68%	-3.75%
令和2年度		3,012	2,581	2,830	2,949	2,807	2,820	3,147	2,859	3,230	2,842	2,988	3,533
		-5.70%	-8.47%	-0.01%	-2.72%	-2.49%	-0.67%	4.38%	-4.97%	-1.47%	-4.28%	-4.10%	8.24%
令和3年度		3,165	2,842	3,054	3,132	3,004	3,015	3,157	3,126	3,421	3,039	2,961	3,624
		5.08%	10.09%	7.91%	6.22%	7.01%	6.93%	0.31%	9.36%	5.93%	6.95%	-0.90%	2.59%
令和4年度		3,192	2,982	3,101	3,170	3,212	3,150	3,225	3,242	3,585	3,214	3,236	3,923
		0.85%	4.93%	1.54%	1.20%	6.91%	4.48%	2.15%	3.69%	4.78%	5.75%	9.30%	8.26%
令和5年度		3,319	3,307	3,433	3,551	3,566	3,564	3,552	3,496	3,916			
		3.96%	10.91%	10.71%	12.02%	11.03%	13.12%	10.13%	7.83%	9.25%			

