

# 保険給付の状況(長野)

(件数:件、金額:千円)

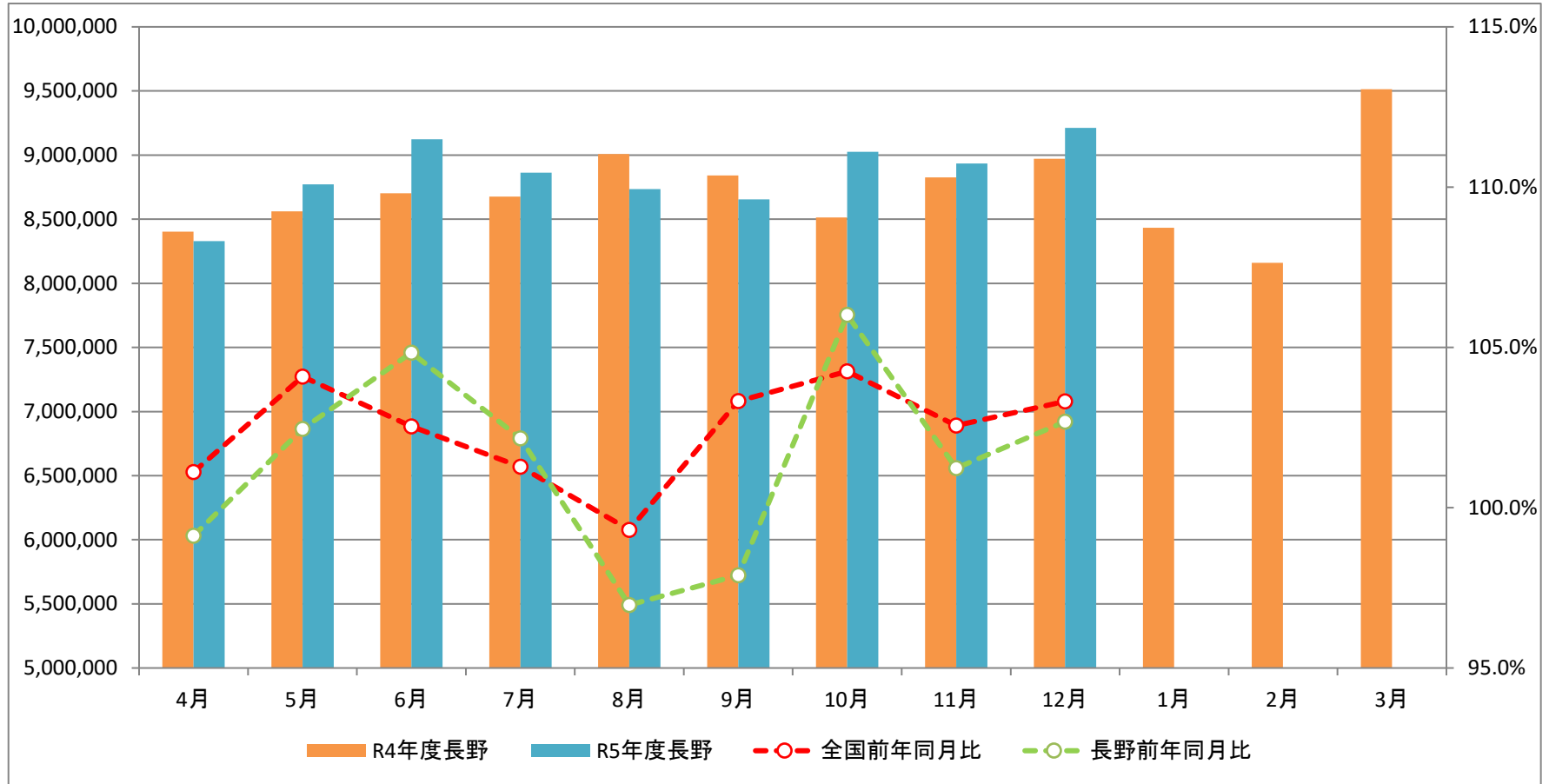
| 令和5年度  |                | 4月        | 5月        | 6月        | 7月        | 8月        | 9月        | 10月       | 11月       | 12月       | 1月        | 2月 | 3月 | 累計         | 割合         |       |
|--------|----------------|-----------|-----------|-----------|-----------|-----------|-----------|-----------|-----------|-----------|-----------|----|----|------------|------------|-------|
| 保険給付合計 | 件数             | 636,498   | 651,488   | 663,730   | 663,719   | 642,719   | 656,419   | 673,948   | 679,433   | 710,859   |           |    |    | 5,978,813  | 100.0%     |       |
|        | 金額             | 8,329,082 | 8,772,264 | 9,123,004 | 8,862,663 | 8,734,149 | 8,654,321 | 9,024,775 | 8,933,594 | 9,212,540 |           |    |    | 79,646,393 | 100.0%     |       |
| うち現物給付 | 件数             | 618,414   | 632,014   | 644,693   | 643,683   | 622,231   | 636,017   | 654,415   | 658,162   | 690,096   |           |    |    | 5,799,725  | 97.0%      |       |
|        | 金額             | 7,619,525 | 7,954,531 | 8,317,346 | 8,094,053 | 7,928,341 | 7,876,575 | 8,216,868 | 8,071,610 | 8,381,399 |           |    |    | 72,460,248 | 91.0%      |       |
| 現物給付内訳 | 内科             | 件数        | 320,016   | 329,678   | 335,342   | 333,764   | 324,369   | 331,094   | 339,278   | 341,975   | 356,367   |    |    |            | 3,011,883  | 50.4% |
|        |                | 金額        | 5,255,236 | 5,595,652 | 5,903,476 | 5,609,536 | 5,526,473 | 5,404,996 | 5,728,361 | 5,664,512 | 5,743,990 |    |    |            | 50,432,232 | 63.3% |
|        | 歯科             | 件数        | 87,342    | 87,046    | 91,917    | 92,477    | 85,963    | 87,450    | 89,991    | 87,995    | 92,712    |    |    |            | 802,893    | 13.4% |
|        |                | 金額        | 736,871   | 719,235   | 777,972   | 774,422   | 700,285   | 739,783   | 761,001   | 731,049   | 775,243   |    |    |            | 6,715,862  | 8.4%  |
|        | 薬剤             | 件数        | 206,578   | 210,597   | 212,481   | 212,589   | 206,890   | 212,792   | 220,402   | 223,442   | 236,310   |    |    |            | 1,942,081  | 32.5% |
|        |                | 金額        | 1,584,290 | 1,595,288 | 1,589,359 | 1,664,337 | 1,654,550 | 1,687,637 | 1,682,586 | 1,631,376 | 1,817,414 |    |    |            | 14,906,837 | 18.7% |
|        | 入院時食事療養費・生活療養費 | 件数        | 4,004     | 4,221     | 4,451     | 4,362     | 4,512     | 4,163     | 4,246     | 4,238     | 4,205     |    |    |            | 38,402     | 0.6%  |
|        |                | 金額        | 21,229    | 22,283    | 22,588    | 22,257    | 22,260    | 20,387    | 21,816    | 22,177    | 22,237    |    |    |            | 197,235    | 0.2%  |
|        | 訪問看護療養費        | 件数        | 474       | 472       | 502       | 491       | 497       | 518       | 498       | 512       | 502       |    |    |            | 4,466      | 0.1%  |
|        |                | 金額        | 21,898    | 22,073    | 23,950    | 23,502    | 24,772    | 23,772    | 23,104    | 22,496    | 22,514    |    |    |            | 208,081    | 0.3%  |
| うち現金給付 | 件数             | 22,088    | 23,695    | 23,488    | 24,398    | 25,000    | 24,565    | 23,779    | 25,509    | 24,968    |           |    |    | 217,490    | 3.6%       |       |
|        | 金額             | 709,557   | 817,734   | 805,657   | 768,610   | 805,809   | 777,746   | 807,907   | 861,984   | 831,141   |           |    |    | 7,186,145  | 9.0%       |       |
| 現金給付内訳 | 傷病手当金          | 件数        | 2,459     | 2,231     | 2,214     | 1,934     | 2,172     | 2,076     | 2,346     | 2,485     | 2,209     |    |    |            | 20,126     | 0.3%  |
|        |                | 金額        | 393,678   | 358,139   | 382,262   | 332,161   | 370,271   | 354,512   | 381,713   | 419,856   | 373,375   |    |    |            | 3,365,966  | 4.2%  |
|        | 出産手当金          | 件数        | 229       | 260       | 247       | 218       | 245       | 231       | 255       | 245       | 256       |    |    |            | 2,186      | 0.0%  |
|        |                | 金額        | 91,283    | 106,118   | 114,367   | 90,956    | 105,546   | 95,082    | 105,270   | 104,398   | 107,970   |    |    |            | 920,991    | 1.2%  |
|        | 埋葬料(費)         | 件数        | 33        | 33        | 43        | 53        | 44        | 48        | 45        | 54        | 47        |    |    |            | 400        | 0.0%  |
|        |                | 金額        | 1,650     | 1,650     | 2,150     | 2,620     | 2,185     | 2,360     | 2,218     | 2,700     | 2,299     |    |    |            | 19,832     | 0.0%  |
|        | 療養費            | 件数        | 17,927    | 18,968    | 19,062    | 20,279    | 20,639    | 20,478    | 19,355    | 20,541    | 20,361    |    |    |            | 177,610    | 3.0%  |
|        |                | 金額        | 82,081    | 89,426    | 89,680    | 93,061    | 96,363    | 91,873    | 92,500    | 96,837    | 97,698    |    |    |            | 829,519    | 1.0%  |
|        | 出産育児一時金        | 件数        | 255       | 533       | 372       | 433       | 388       | 407       | 390       | 401       | 423       |    |    |            | 3,602      | 0.1%  |
|        |                | 金額        | 107,096   | 224,100   | 180,756   | 216,036   | 193,640   | 203,360   | 194,856   | 200,416   | 211,288   |    |    |            | 1,731,548  | 2.2%  |
|        | 高額療養費          | 件数        | 1,185     | 1,670     | 1,550     | 1,480     | 1,512     | 1,324     | 1,387     | 1,783     | 1,672     |    |    |            | 13,563     | 0.2%  |
|        |                | 金額        | 28,845    | 38,301    | 36,442    | 33,770    | 37,804    | 30,556    | 31,332    | 37,776    | 38,511    |    |    |            | 284,492    | 0.4%  |
|        | その他            | 件数        | 0         | 0         | 0         | 1         | 0         | 1         | 1         | 0         | 0         |    |    |            | 3          | 0.0%  |
|        |                | 金額        | 0         | 0         | 0         | 6         | 0         | 3         | 18        | 0         | 0         |    |    |            | 27         | 0.0%  |

※端数整理のため係数が整合しない場合がある

※現金給付の「その他」は入院時食事療養費・生活療養費(標準負担額差額支給)と移送費の合計

# 保険給付費の推移(長野)

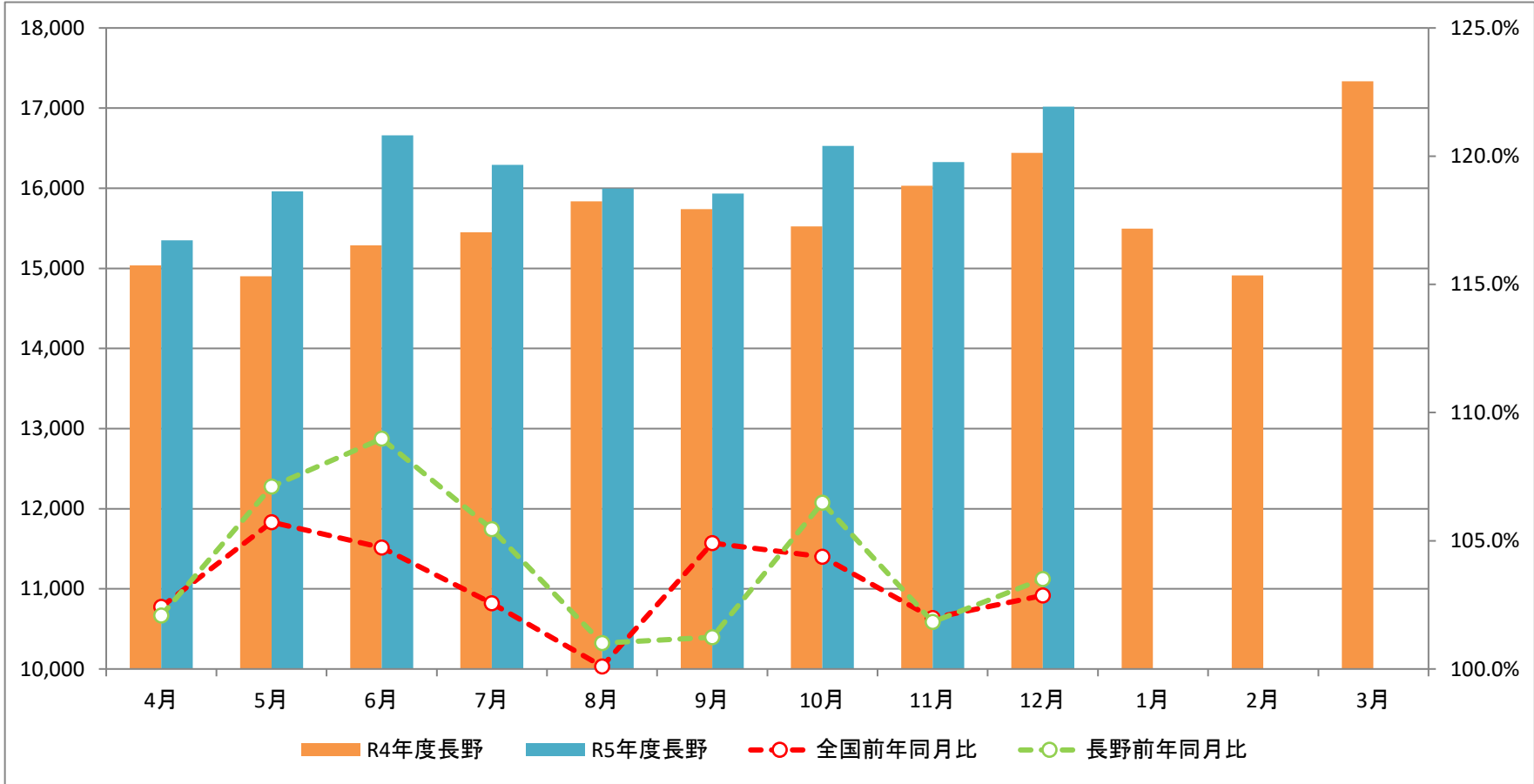
(千円)



|                   |    | 4月          | 5月          | 6月          | 7月          | 8月          | 9月          | 10月         | 11月         | 12月         | 1月          | 2月          | 3月          |
|-------------------|----|-------------|-------------|-------------|-------------|-------------|-------------|-------------|-------------|-------------|-------------|-------------|-------------|
| R5年度<br>保険給付費(千円) | 全国 | 557,385,659 | 574,252,382 | 595,561,611 | 596,857,300 | 593,731,237 | 589,418,893 | 603,572,573 | 589,231,352 | 612,292,821 |             |             |             |
|                   | 長野 | 8,329,082   | 8,772,264   | 9,123,004   | 8,862,663   | 8,734,149   | 8,654,321   | 9,024,775   | 8,933,594   | 9,212,540   |             |             |             |
| R4年度<br>保険給付費(千円) | 全国 | 551,256,822 | 551,710,456 | 580,849,095 | 589,330,156 | 597,844,039 | 570,468,458 | 578,949,882 | 574,513,380 | 592,656,494 | 568,103,578 | 557,016,797 | 631,783,310 |
|                   | 長野 | 8,402,835   | 8,562,142   | 8,702,323   | 8,675,371   | 9,007,580   | 8,840,797   | 8,512,758   | 8,824,988   | 8,971,551   | 8,434,330   | 8,159,350   | 9,513,889   |
| R5-R4<br>前年同月比(%) | 全国 | 101.1%      | 104.1%      | 102.5%      | 101.3%      | 99.3%       | 103.3%      | 104.3%      | 102.6%      | 103.3%      |             |             |             |
|                   | 長野 | 99.1%       | 102.5%      | 104.8%      | 102.2%      | 97.0%       | 97.9%       | 106.0%      | 101.2%      | 102.7%      |             |             |             |

# 加入者一人当たりの医療費の推移(長野)

(円)



|                     |    | 4月     | 5月     | 6月     | 7月     | 8月     | 9月     | 10月    | 11月    | 12月    | 1月     | 2月     | 3月     |
|---------------------|----|--------|--------|--------|--------|--------|--------|--------|--------|--------|--------|--------|--------|
| R5年度<br>一人当たり医療費(円) | 全国 | 16,118 | 16,579 | 17,207 | 17,370 | 17,106 | 17,030 | 17,292 | 16,875 | 17,674 |        |        |        |
|                     | 長野 | 15,348 | 15,963 | 16,661 | 16,292 | 15,995 | 15,933 | 16,530 | 16,325 | 17,016 |        |        |        |
| R4年度<br>一人当たり医療費(円) | 全国 | 15,737 | 15,682 | 16,430 | 16,936 | 17,089 | 16,234 | 16,567 | 16,547 | 17,181 | 16,411 | 16,090 | 18,241 |
|                     | 長野 | 15,035 | 14,902 | 15,288 | 15,451 | 15,836 | 15,739 | 15,522 | 16,031 | 16,440 | 15,495 | 14,911 | 17,334 |
| R5-R4<br>前年同月比(%)   | 全国 | 102.4% | 105.7% | 104.7% | 102.6% | 100.1% | 104.9% | 104.4% | 102.0% | 102.9% |        |        |        |
|                     | 長野 | 102.1% | 107.1% | 109.0% | 105.4% | 101.0% | 101.2% | 106.5% | 101.8% | 103.5% |        |        |        |